

LINCOLN

AT IPI CENTER



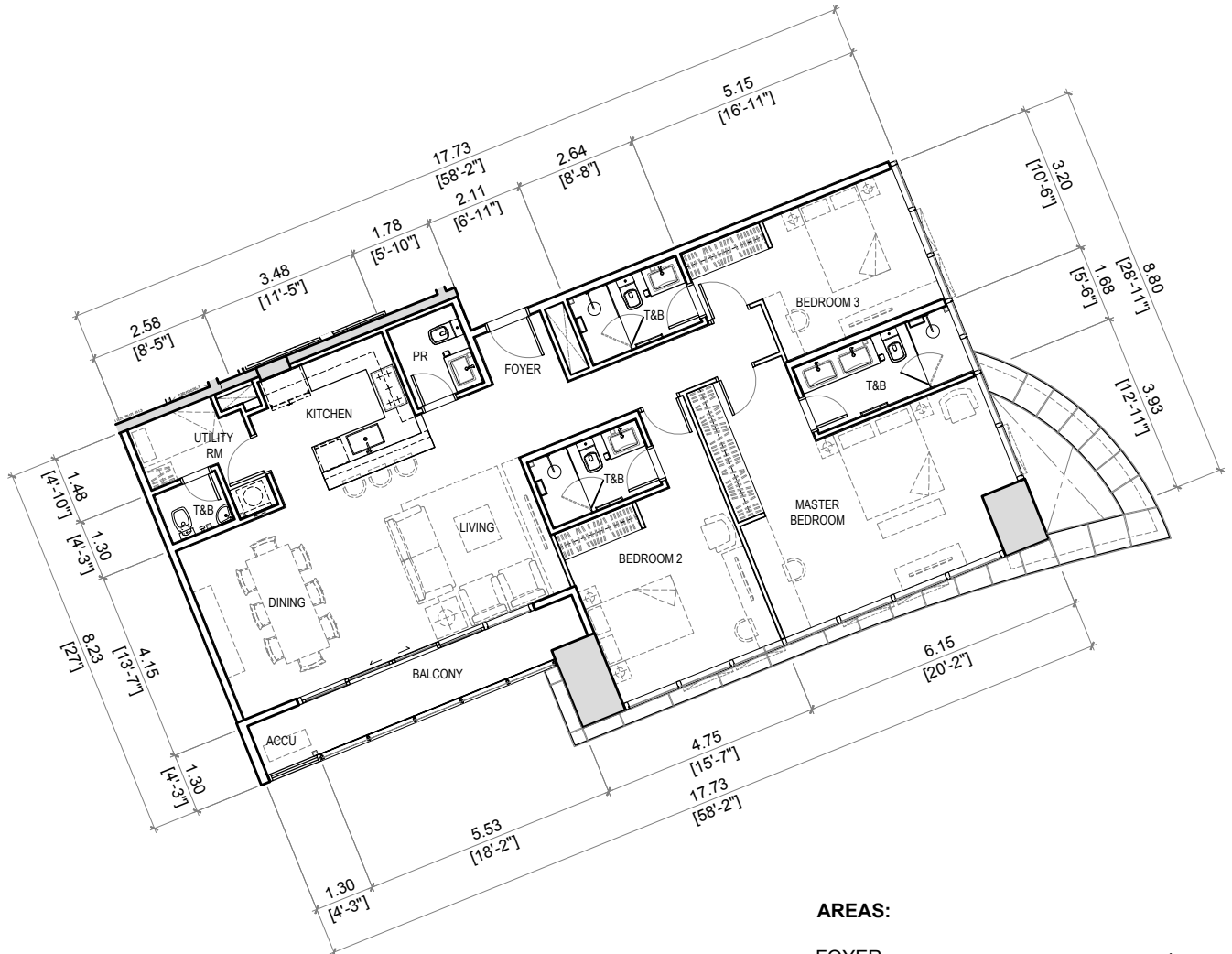
TYPICAL FLOORS (3RD-49TH)

UNIT TYPE	UNIT SIZE (SQM)	NO. OF UNITS
		PER FLOOR
STUDIO	33 - 35	4
1BR	39 - 65	4
2BR	104	3
3BR	154	1

The above information and drawings are conceptual and subject to change without prior notice. The Developer reserves the right to make additions, deletions and modifications to the drawings as the Developer may deem appropriate or desirable.
August 2023.

LINCOLN

AT IPI CENTER



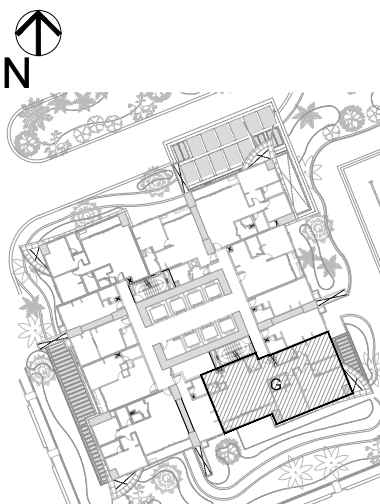
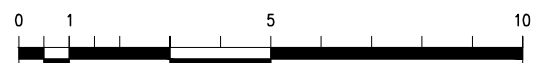
AREAS:

FOYER	4 sm
LIVING / DINING / HALLWAY	41 sm
KITCHEN	10 sm
POWDER ROOM	4 sm
MASTER BEDROOM	29 sm
MBR T&B	7 sm
BEDROOM 2	19 sm
BEDROOM 2 T&B	4 sm
BEDROOM 3	15 sm
BEDROOM 3 T&B	4 sm
UTILITY ROOM	5 sm
UTILITY T&B	2 sm
ACCU	2 sm
BALCONY	8 sm

TOTAL : 154 sm

LEVEL : 2 - 49

UNIT TYPE : **UNIT G**
3-BEDROOM



KEYPLAN
2ND TO 49TH FLOOR

LINCOLN

AT IPI CENTER

Unit Number :	LINC-10G		
Turnover:	April 2029		
Tower:	Lincoln Tower		
Orientation:	South-East		
Area:	154 sqm	/	1658 sq.ft
Unit Price with VAT	PHP		47,003,436.00
Less: 5% Special Discount			2,350,172.00
Total Price:			44,653,264.00
Add: 2 Parking Slots			3,300,000.00
Total Price:			47,953,264.00
TOTAL CONTRACT PRICE	PHP		47,953,264.00

PAYMENT TERM: 10-20(41)-70
Three Bedroom Unit

Original Payment Term Proposed

Reservation Fee	PHP	100,000.00	Reservation Fee
10% Down Payment		4,695,326.40	First monthly within 15 days from RF
OPTION 1 (Straight Amortization):			
20% Monthly Amortization for 41 months		233,918.36	First monthly within 15 days from DP
OPTION 2 (Amortization with Lumpsum every 10 months)			
10% Monthly Amortization for 41 months		116,959.18	First monthly within 15 days from DP
10% Lumpsum on Month 10, 20, 30, 40		1,198,831.60	every 10 months
70% Balance		33,567,284.80	on April 2029
Total Contract Price	PHP	47,953,264.00	

Prepared on: October 2, 2025

* RIDC reserves the right to change above terms and prices without prior notice

* Other taxes and fees for the account of the Purchaser